

Course: W/L course with offset mark

Distance: app. 6 nm depending of the wind

This course will be laid to meet at target sailing time of app. 45 minutes.

The course: Start – M1 - M1a – Ga/Gb – continue in accordance with the Warning signal – Finish.
Each mark must be passed on the required side and in the correct order.

The Gate (Ga/Gb) have no function in the last lap to the finish line.

A shorter or longer distance will not be ground for redress.

Used Buoys: Ga, Gb, M1 is square orange buoys marked Pantaenius.

Replacement buoys: Yellow cylinders.

The race committee signal boat: X-332 “Pelex” is used both as starting- and finishing boat.

Starting line between Signal boat and Orange Square buoy marked Pantaenius.

Finishing line between Signal boat and buoy with blue flag.

The starting line is to the port side of the Signal Boat, finishing line to the starboard side of the Signal boat.

Start procedure:

Start at 10:00, only 1 start, “Pennant 1, 2 or 3” will be used for all classes as class flag, indicating how many rounds to be sailed.

Warning signal: Class flag, 5 min. before start, 1 sound.

Preparatory signal: P “Blue Petter”, “I”, “Z” or Black flag, 4 min. before start, 1 sound.

One Minute: Preparatory signal removed, 1 long sound signal.

Start signal: 0 min. left, Class flag removed, 1 sound.

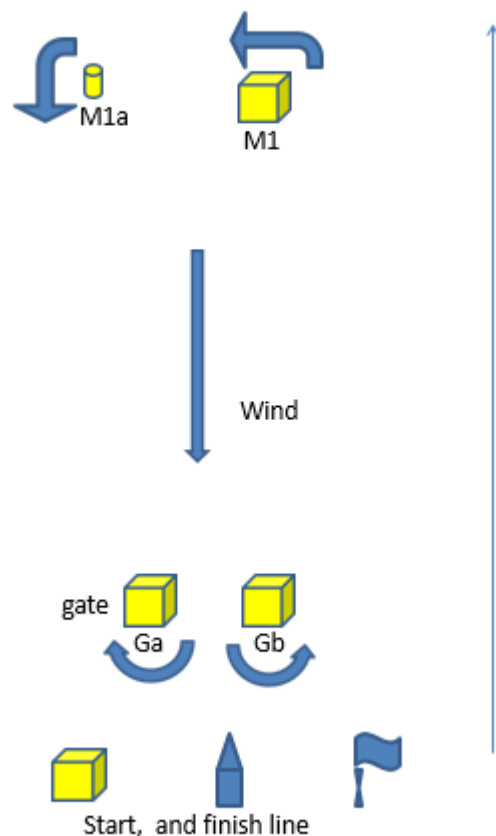
There will only be sound signals by compressorhorn, no shooting.

You can hear the countdown over VHF channel 72 if not used for communication by others ships.

As soon as possible after the last boat have finished, a new warning signal for the next race will be given.

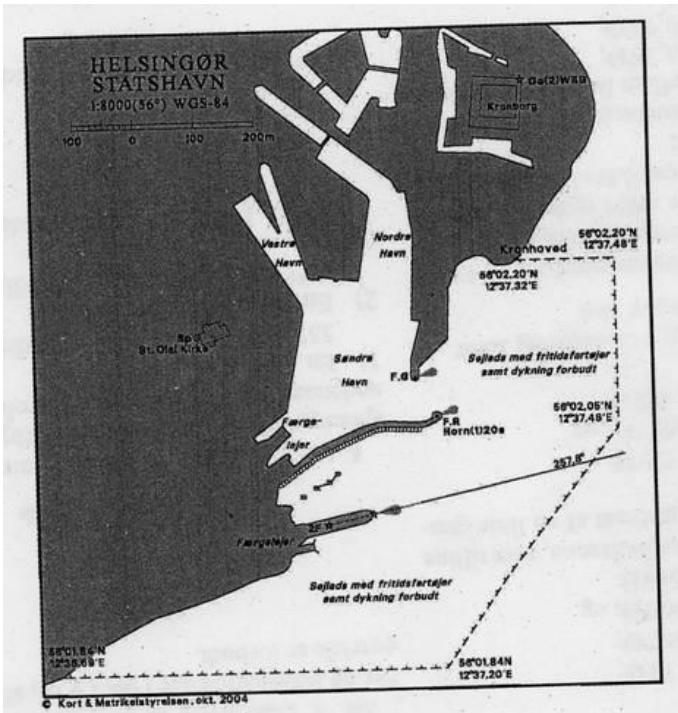
See Restricted areas on page 3:

W/L Course with offset



Restricted areas:

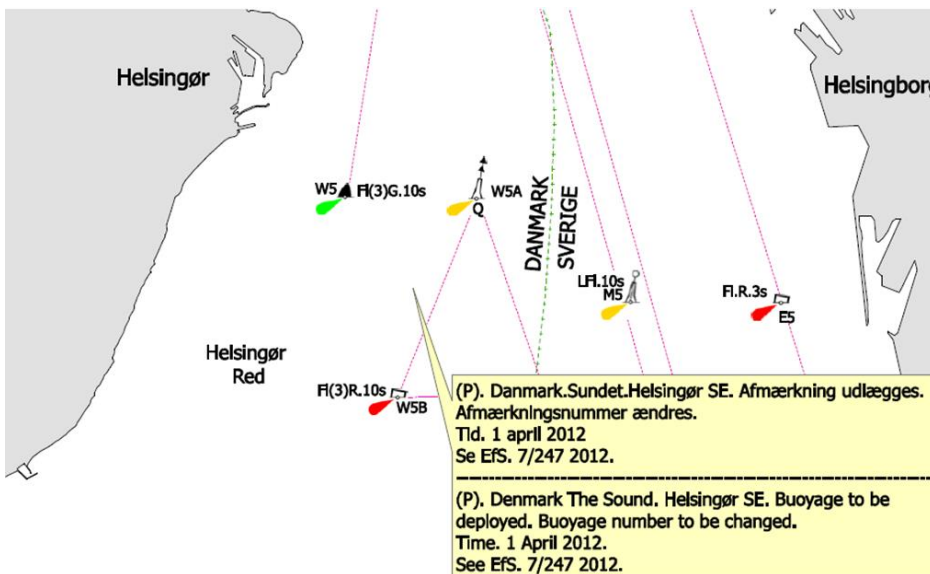
An area just outside and south of Elsinore Harbor is restricted, when enter or leaving the harbor don't disturb the ferries and keep good distance.



Figur 1

In the middle of the Sound (Øresund) there is a Traffic Separation restriction zone from W1/E1 to W7/E7, the Coastguard's are very strict. Don't pass the line from W4 to W5 (new Buoyage).

RSS §48.2 A boat shall comply with rule 10, Traffic Separation Schemes, of the IRPCAS.



In Swedish part of Øresund it's not allowed to drink any alcohol on boat's over 33 feet.